



**Laser
Fantasy**


SERVICE MANUAL

FUNAI

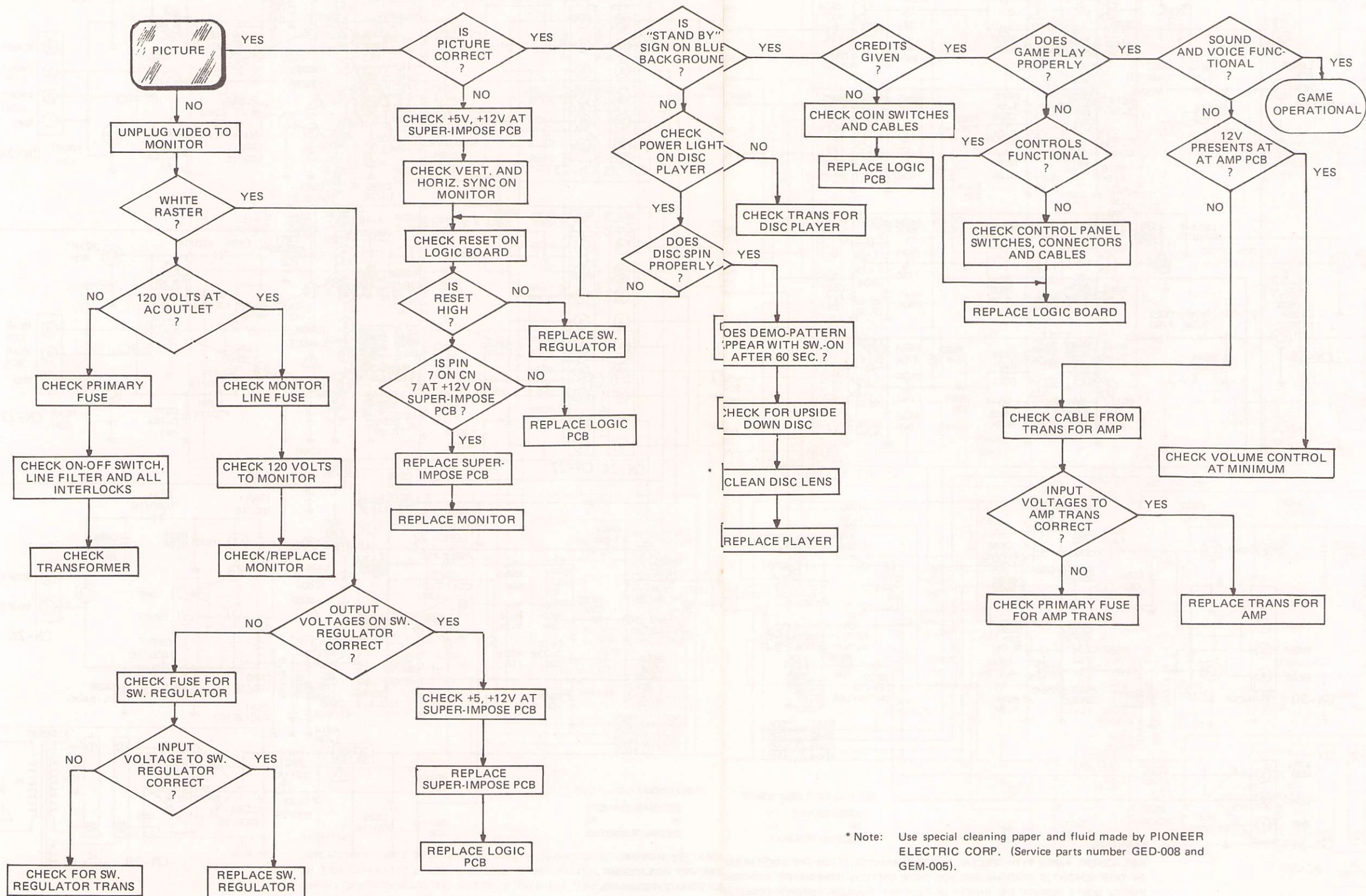
CONTENTS

* TABLE OF CONTENTS	2
* TROUBLE SHOOTING FLOW CHART	3 – 4
* LASER DISC GAME SOUND CONTROL	
Schematic Diagram	5
Parts Location	6
Replacement Parts List	7 – 8
* SUPER IMPOSE	
Schematic Diagram	9
Parts Location	10
Replacement Parts List	11 – 12
* CONTROL PCB I	
Parts Location	13
Replacement Parts List	14 – 15
* CONTROL PCB II	
Parts Location	16
Replacement Parts List	17 – 18
* CONTROL PCB III	
Parts Location	19
Replacement Parts List	20 – 21
* SWITCHING REGULATOR	
Schematic Diagram	22 – 23
Replacement Parts List	24
* WIRING DIAGRAM (FOR COCK-PIT TYPE)	
Diagram	25 – 26
Connector List	27
* WIRING DIAGRAM (FOR UPRIGHT TYPE)	
Diagram	28 – 29
Connector List	30

SAFETY NOTICE:

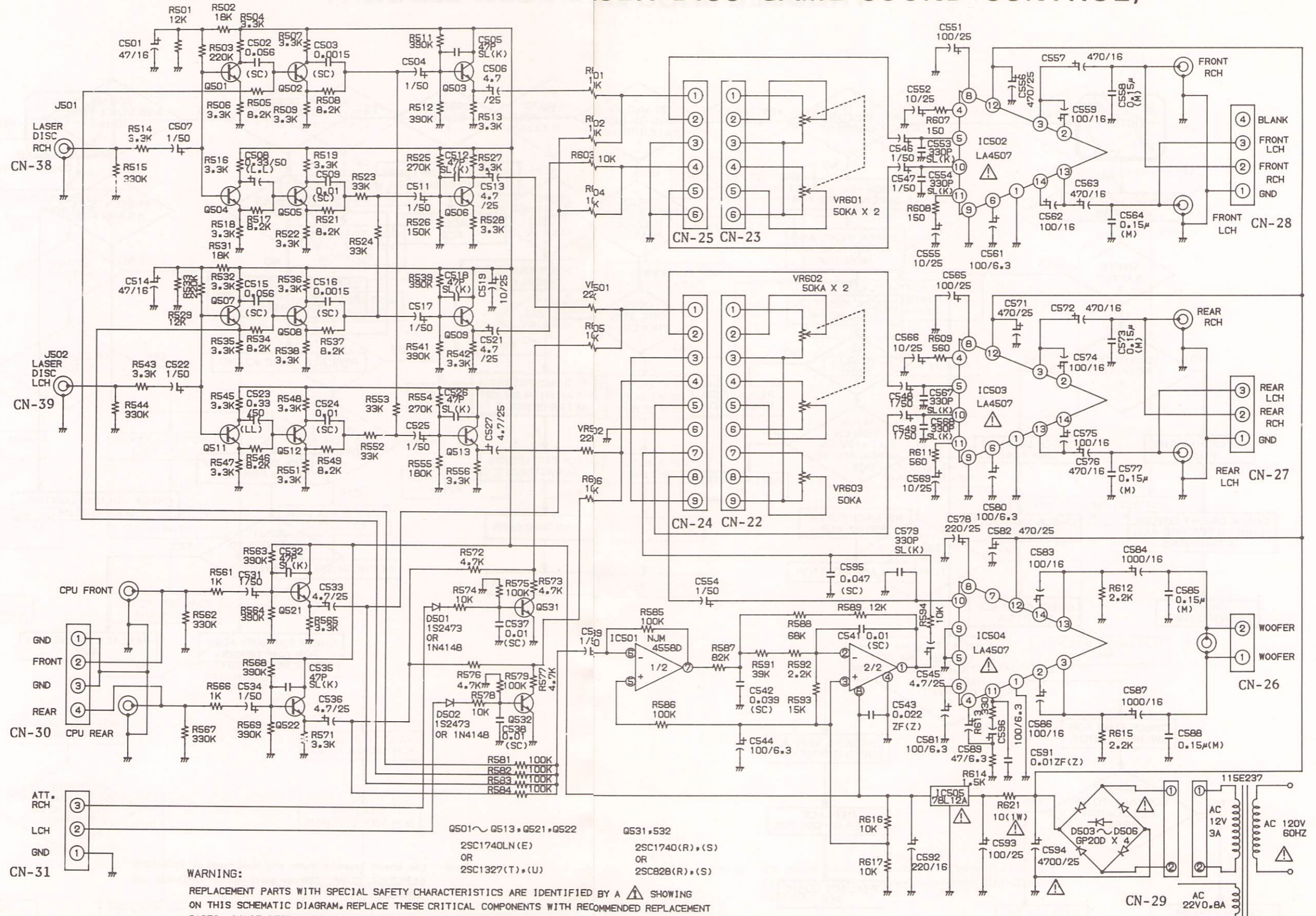
There are special components used in the above circuit which are important for safety. These parts are identified by  on the schematic diagram. It is essential that these critical parts should be replaced with manufacturer's specified parts to prevent shock, fire, or other hazards. Do not modify the original design without permission of FUNAI Electric.

TROUBLE SHOOTING FLOW CHART



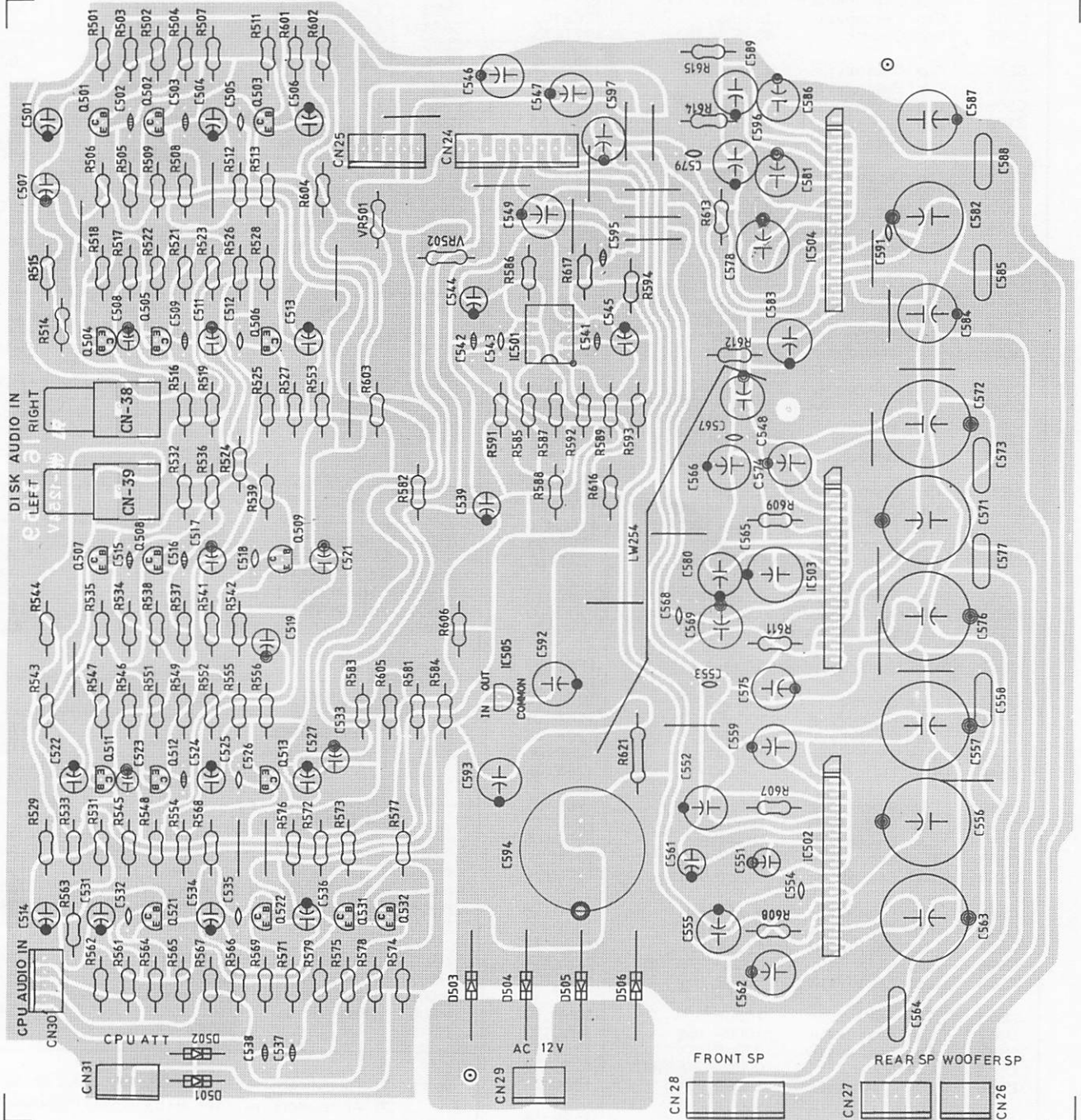
* Note: Use special cleaning paper and fluid made by PIONEER ELECTRIC CORP. (Service parts number GED-008 and GEM-005).

SCHEMATIC DIAGRAM (LASER DISC GAME SOUND CONTROL)



WARNING:
 REPLACEMENT PARTS WITH SPECIAL SAFETY CHARACTERISTICS ARE IDENTIFIED BY A ⚠️ SHOWING ON THIS SCHEMATIC DIAGRAM. REPLACE THESE CRITICAL COMPONENTS WITH RECOMMENDED REPLACEMENT PARTS. DON'T DEGRADE THE SAFETY OF THIS SET THROUGH IMPROPER SERVICING. SERVICE PERSONNEL SHOULD MAKE LEAKAGE-CURRENT OR RESISTANCE MEASUREMENTS TO DETERMINE THAT EXPOSED PARTS ARE ACCEPTABLY INSULATED FROM THE SUPPLY CIRCUIT BEFORE RETURNING THE APPLIANCE TO THE CUSTOMER.

LASER DISC GAME SOUND CONTROL PCB

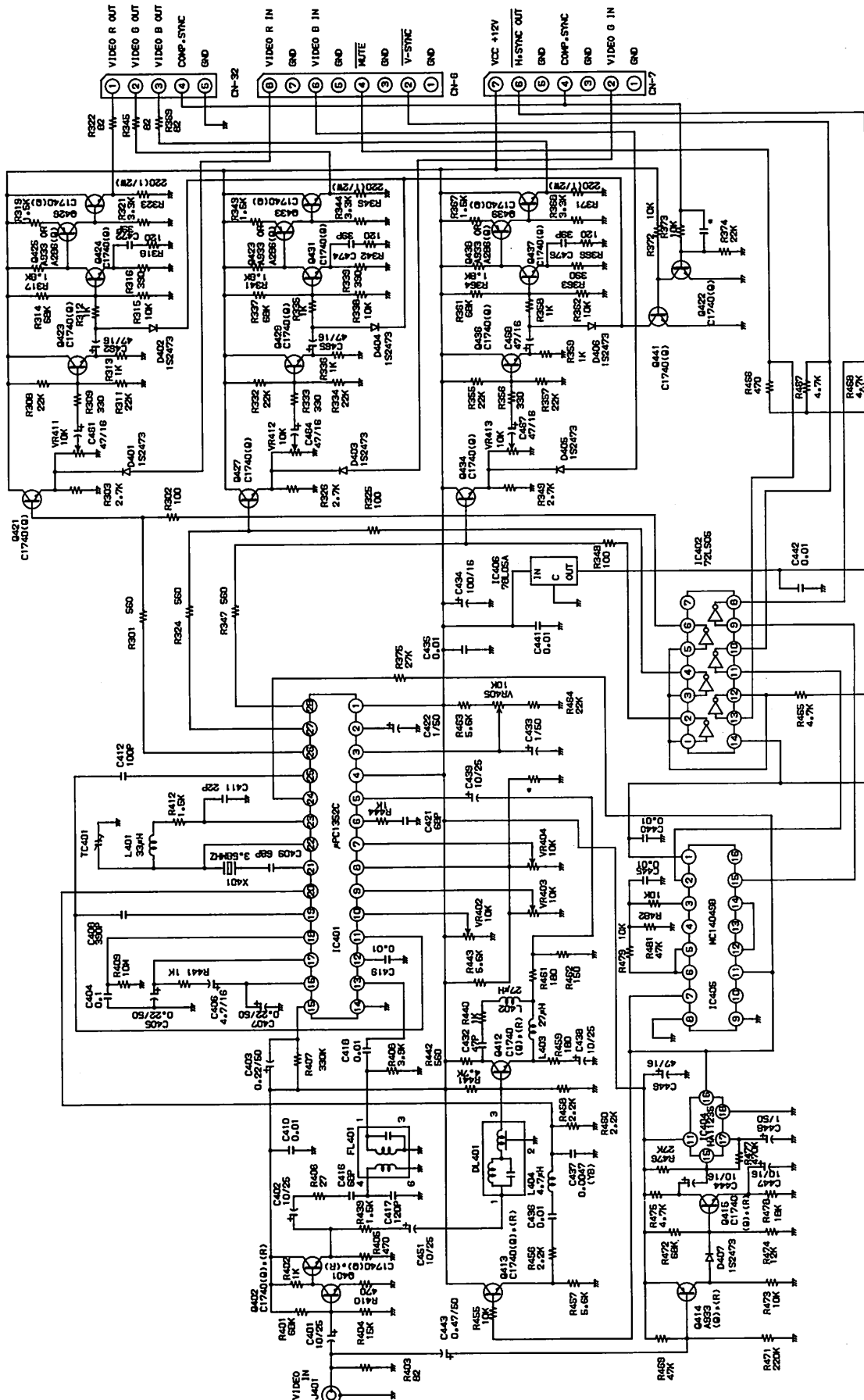


Ref. No.	Description	Part No.	Ref. No.	Description	Part No.
PC Board Ass'y, AMP		1180508			
CAPACITORS					
C501	Cap. Electrolytic 47 μ F/16V	126C476	C577	Cap. Mylar 0.15 μ F/50V	1252154
C502	Cap. Semi-conductor 0.056 μ F (K)	12Y2563	*C578	Cap. Electrolytic 220 μ F/25V	126D227
C503	Cap. Semi-conductor 0.0015 μ F (K)	12Y2152	C579	Cap. Ceramic 330pF SL (K)	1271331
C504	Cap. Electrolytic 1 μ F/50V	126F105	C580	Cap. Electrolytic 100 μ F/6.3V	126A107
C505	Cap. Ceramic 47pF SL (K)	1271470	C581		
C506	Cap. Electrolytic 4.7 μ F/25V	126D475	*C582	Cap. Electrolytic 470 μ F/25V	126D477
C507	Cap. Electrolytic 1 μ F/50V	126F105	C583	Cap. Electrolytic 100 μ F/16V	126C107
C508	Cap. Electrolytic 0.33 μ F/50V	126F334	*C584	Cap. Electrolytic 1000 μ F/16V	126C108
C509	Cap. Semi-conductor 0.01 μ F (K)	12Y2103	*C585	Cap. Mylar 0.15 μ F/50V	1252154
C511	Cap. Electrolytic 1 μ F/50V	126F105	C586	Cap. Electrolytic 100 μ F/16V	126C107
C512	Cap. Ceramic 47pF SL (K)	1271470	*C587	Cap. Electrolytic 1000 μ F/16V	126C108
C513	Cap. Electrolytic 4.7 μ F/25V	126D475	*C588	Cap. Mylar 0.15 μ F/50V	1252154
C514	Cap. Electrolytic 47 μ F/16V	126C476	C589	Cap. Electrolytic 47 μ F/6.3V	126A476
C515	Cap. Semi-conductor 0.056 μ F (K)	12Y2563	C591	Cap. Ceramic 0.01 μ F (Z)	12G3103
C516	Cap. Semi-conductor 0.0015 μ F (K)	12Y2152	C592	Cap. Electrolytic 220 μ F/16V	126C227
C517	Cap. Electrolytic 1 μ F/50V	126F105	C593	Cap. Electrolytic 100 μ F/25V	126D107
C518	Cap. Ceramic 47pF SL (K)	1271470	C594	Cap. Electrolytic 4700 μ F/25V	126D478
C519	Cap. Electrolytic 10 μ F/25V	126D106	C595	Cap. Semi-conductor 0.047 μ F (K)	12Y2473
C521	Cap. Electrolytic 4.7 μ F/25V	126D475	C506	Cap. Electrolytic 100 μ F/6.3V	126A107
C522	Cap. Electrolytic 1 μ F/50V	126D105	DIODES		
C523	Cap. Electrolytic 0.33 μ F/50V	126F334	D501	Diode	1S2473
C524	Cap. Semi-conductor 0.01 μ F (K)	12Y2103	D502	Diode	
C525	Cap. Electrolytic 1 μ F/50V	126F105	D503	Diode	GP20D
C526	Cap. Ceramic 47pF SL (K)	1271470	D504	Diode	GP20D
C527	Cap. Electrolytic 4.7 μ F/25V	126D475	D505	Diode	GP20D
C531	Cap. Electrolytic 1 μ F/50V	126F105	D506	Diode	GP20D
C532	Cap. Ceramic 47pF SL (K)	1271470	ICS		
C533	Cap. Electrolytic 4.7 μ F/25V	126D475	*IC501	IC (L.P.F.)	BA4558 or NJM45580
C534	Cap. Electrolytic 1 μ F/50V	126F105	IC502	IC (POWER)	LA4507
C535	Cap. Ceramic 47pF SL (K)	1271470	IC503	IC (POWER)	LA4507
C536	Cap. Electrolytic 4.7 μ F/25V	126D475	*IC504	IC (POWER)	LA4507
C537	Cap. Semi-conductor 0.01 μ F (K)	12Y2103	IC505	IC (REGULATOR)	78L12A
C538	Cap. Semi-conductor 0.01 μ F (K)	12Y2103	JACKS		
C541			J501	Jack, Pin RCA	1780005
C542	Cap. Semi-conductor 0.039 μ F (K)	12Y2393	J502	Jack, Pin RCA	1780005
C543	Cap. Ceramic 0.022 μ F (Z)	12G2223	RESISTORS		
C544	Cap. Electrolytic 100 μ F/6.3V	126A107	R501	Res. Carbon 12K ohm	1346123
C546	Cap. Electrolytic 1 μ F/50V	126F105	R502	Res. Carbon 18K ohm	1346183
C547	Cap. Electrolytic 1 μ F/50V	126F105	R503	Res. Carbon 220K ohm	1346224
C548	Cap. Electrolytic 1 μ F/50V	126F105	R504	Res. Carbon 3.3K ohm	1346332
C549	Cap. Electrolytic 1 μ F/50V	126F105	R505	Res. Carbon 8.2K ohm	1346822
C551	Cap. Electrolytic 100 μ F/25V	126D107	R506	Res. Carbon 3.3K ohm	1346332
C552	Cap. Electrolytic 10 μ F/25V	126D106	R507	Res. Carbon 3.3K ohm	1346332
C553	Cap. Ceramic 330pF SL (K)	1271331	R508	Res. Carbon 8.2K ohm	1346822
C554	Cap. Ceramic 330pF SL (K)	1271331	R509	Res. Carbon 3.3K ohm	1346332
C555	Cap. Electrolytic 10 μ F/25V	126D106	R511	Res. Carbon 390K ohm	1346394
C556	Cap. Electrolytic 470 μ F/25V	126D477	Note: 1) Tolerance: J=±5%, K=±10%, M=±20%, Z=+80%/-20% 2) All resistors are 1/4W, J(±5%) unless otherwise noted. Note: 1. All parts are common for both model of F2561U9 and F2570U0 unless otherwise noted. 2. Asterisk (*) marked parts are only for model of F2561U9 (cock-pit type). 3. Asterisks (**) marked parts are only for model of F2570U0 (up-right type).		
C557	Cap. Electrolytic 470 μ F/16V	126C477			
C558	Cap. Mylar 0.15 μ F/50V (M)	1252154			
C559	Cap. Electrolytic 100 μ F/16V	126C107			
C561	Cap. Electrolytic 100 μ F/6.3V	126A107			
C562	Cap. Electrolytic 100 μ F/16V	126C107			
C563	Cap. Electrolytic 470 μ F/16V	126C477			
C564	Cap. Mylar 0.15 μ F/50V (M)	1252154			
C565	Cap. Electrolytic 100 μ F/25V	126D107			
C566	Cap. Electrolytic 10 μ F/25V	126D106			
C567	Cap. Ceramic 330pF SL (K)	1271331			
C568	Cap. Ceramic 330pF SL (K)	1271331			
C569	Cap. Electrolytic 10 μ F/25V	126D106			
C571	Cap. Electrolytic 470 μ F/25V	126D477			
C572	Cap. Electrolytic 470 μ F/16V	126C477			
C573	Cap. Mylar 0.15 μ F/50V (M)	1252154			
C574	Cap. Electrolytic 100 μ F/16V	126C107			
C575	Cap. Electrolytic 100 μ F/16V	126C107			
C576	Cap. Electrolytic 470 μ F/16V	126C477			

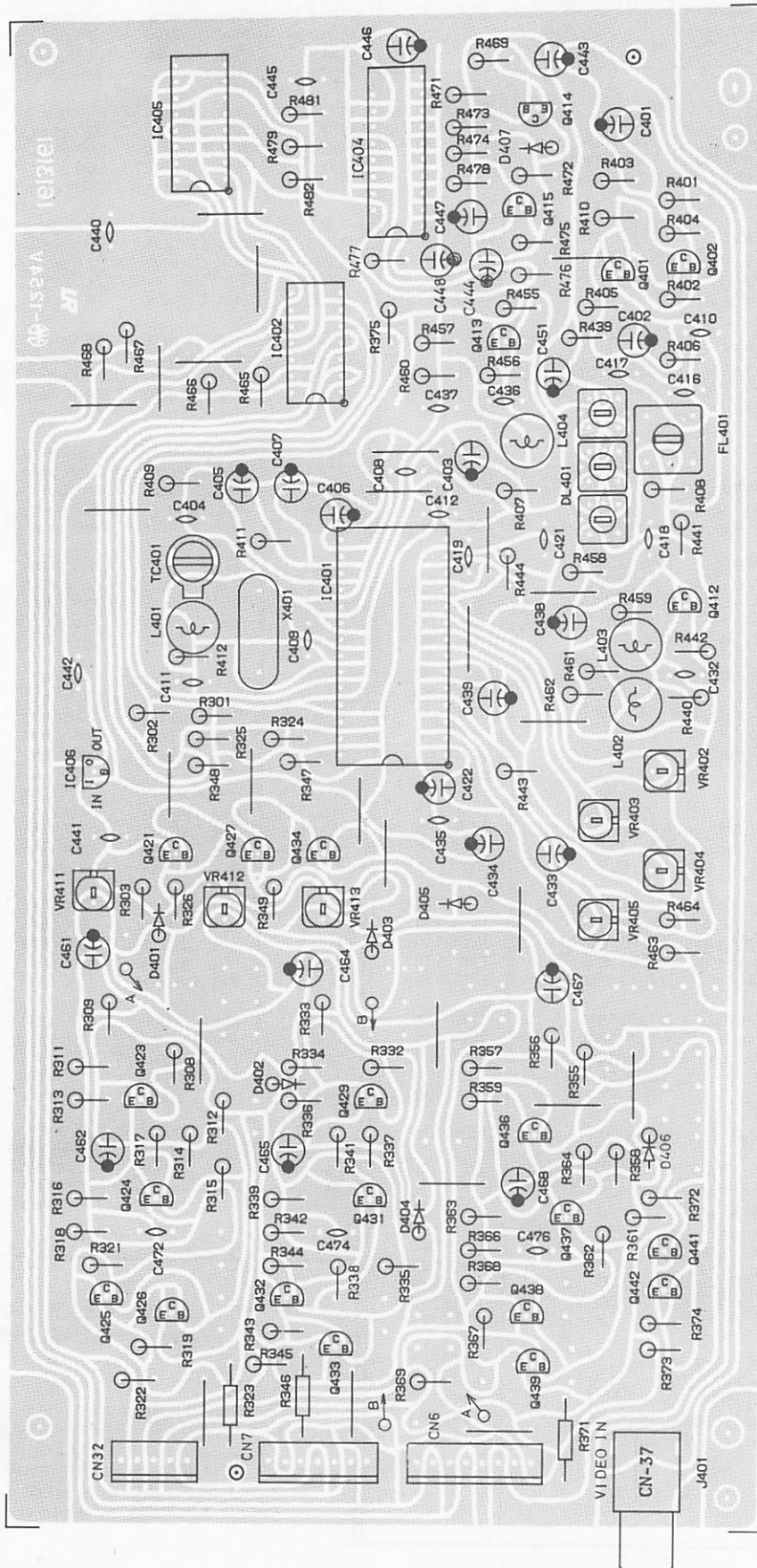
Ref. No.	Description	Part No.	Ref. No.	Description	Part No.
R512	Res. Carbon 390K ohm	1346394	R594	Res. Carbon 10K ohm	1346103
R513	Res. Carbon 3.3K ohm	1346332	R601	Res. Carbon 10K ohm	1346103
R514	Res. Carbon 3.3K ohm	1346332	R602	Res. Carbon 10K ohm	1346103
R515	Res. Carbon 330K ohm	1346334	R603	Res. Carbon 10K ohm	1346103
R516	Res. Carbon 3.3K ohm	1346332	R604	Res. Carbon 10K ohm	1346103
R517	Res. Carbon 8.2K ohm	1346822	R605	Res. Carbon 10K ohm	1346103
R518	Res. Carbon 3.3K ohm	1346332	R606	Res. Carbon 10K ohm	1346103
R519	Res. Carbon 3.3K ohm	1346332	R607	Res. Carbon 150 ohm	1346151
R521	Res. Carbon 8.2K ohm	1346822	R608	Res. Carbon 150 ohm	1346151
R522	Res. Carbon 3.3K ohm	1346332	R609	Res. Carbon 560 ohm	1346561
R523	Res. Carbon 33K ohm	1346333	R611	Res. Carbon 560 ohm	1346561
R524	Res. Carbon 33K ohm	1346333	R612	Res. Carbon 2.2K ohm	1346222
R525	Res. Carbon 270K ohm	1346274	R613	Res. Carbon 330 ohm	1346331
R526	Res. Carbon 150K ohm	1346154	R614	Res. Carbon 1.5K ohm	1346152
R527	Res. Carbon 3.3K ohm	1346332	R615	Res. Carbon 2.2K ohm	1346222
R528	Res. Carbon 3.3K ohm	1346332	R616	Res. Carbon 10K ohm	1346103
R529	Res. Carbon 12K ohm	1346123	R617	Res. Carbon 10K ohm	1346103
R531	Res. Carbon 18K ohm	1346183	R621	Res. Metal 10 ohm, 1W	134A100
R532	Res. Carbon 3.3K ohm	1346332	R631	Res. Carbon 22K ohm	1346223
R533	Res. Carbon 220K ohm	1346224	R632	Res. Carbon 22K ohm	1346223
R534	Res. Carbon 8.2K ohm	1346822	TRANSISTORS		
R535	Res. Carbon 3.3K ohm	1346332	Q501	TR. 2SC1740LN(E)	C1740LNE
R536	Res. Carbon 3.3K ohm	1346332	Q502	TR. 2SC1740LN(E)	C1740LNE
R537	Res. Carbon 8.2K ohm	1346822	Q503	TR. 2SC1740LN(E)	C1740LNE
R538	Res. Carbon 3.3K ohm	1346332	Q504	TR. 2SC1740LN(E)	C1740LNE
R539	Res. Carbon 390K ohm	1346394	Q505	TR. 2SC1740LN(E)	C1740LNE
R541	Res. Carbon 390K ohm	1346394	Q506	TR. 2SC1740LN(E)	C1740LNE
R542	Res. Carbon 3.3K ohm	1346332	Q507	TR. 2SC1740LN(E)	C1740LNE
R543	Res. Carbon 3.3K ohm	1346332	Q508	TR. 2SC1740LN(E)	C1740LNE
R544	Res. Carbon 330K ohm	1346334	Q509	TR. 2SC1740LN(E)	C1740LNE
R545	Res. Carbon 3.3K ohm	1346332	Q511	TR. 2SC1740LN(E)	C1740LNE
R546	Res. Carbon 8.2K ohm	1346822	Q512	TR. 2SC1740LN(E)	C1740LNE
R547	Res. Carbon 3.3K ohm	1346332	Q513	TR. 2SC1740LN(E)	C1740LNE
R548	Res. Carbon 3.3K ohm	1346332	Q521	TR. 2SC1740LN(E)	C1740LNE
R549	Res. Carbon 8.2K ohm	1346822	Q522	TR. 2SC1740LN(E)	C1740LNE
R551	Res. Carbon 3.3K ohm	1346332	Q531	TR. 2SC1740(R) or (S)	C1740RS
R552	Res. Carbon 33K ohm	1346333	Q532		
R553	Res. Carbon 33K ohm	1346333	MISCELLANEOUS		
R554	Res. Carbon 270K ohm	1346274	CN24	NH Connector Pin (9P)	1740200
R555	Res. Carbon 180K ohm	1346184	CN25	NH Connector Pin (6P)	1720977
R556	Res. Carbon 3.3K ohm	1346332	CN26	VH Connector Pin (2P)	1740494
R561	Res. Carbon 1K ohm	1346102	CN27	VH Connector Pin (3P)	1740495
R562	Res. Carbon 330K ohm	1346334	CN28	VH Connector Pin (4P)	1740496
R563	Res. Carbon 390K ohm	1346394	CN29	VH Connector Pin (2P)	1740494
R564	Res. Carbon 390K ohm	1346394	CN30	NH Connector Pin (4P)	1720970
R565	Res. Carbon 3.3K ohm	1346332	CN31	NH Connector Pin (3P)	1720969
R566	Res. Carbon 1K ohm	1346102			
R567	Res. Carbon 330K ohm	1346334			
R568	Res. Carbon 390K ohm	1346394			
R569	Res. Carbon 390K ohm	1346394			
R571	Res. Carbon 3.3K ohm	1346332			
R572	Res. Carbon 4.7K ohm	1346472			
R573	Res. Carbon 4.7K ohm	1346472			
R574	Res. Carbon 10K ohm	1346103			
R575	Res. Carbon 100K ohm	1346104			
R576	Res. Carbon 4.7K ohm	1346472			
R577	Res. Carbon 4.7K ohm	1346472			
R578	Res. Carbon 10K ohm	1346103			
R579	Res. Carbon 100K ohm	1346104			
R581	Res. Carbon 100K ohm	1346104			
R582	Res. Carbon 100K ohm	1346104			
R583	Res. Carbon 100K ohm	1346104			
R584	Res. Carbon 100K ohm	1346104			
R585	Res. Carbon 100K ohm	1346104			
R586	Res. Carbon 100K ohm	1346104			
R587	Res. Carbon 82K ohm	1346823			
R588	Res. Carbon 68K ohm	1346683			
R591	Res. Carbon 39K ohm	1346393			
R592	Res. Carbon 2.2K ohm	1346222			
R593	Res. Carbon 15K ohm	1346153			

Note: 1. All parts are common for both model of F2561U9 and F2570U0 unless otherwise noted.
2. Asterisk (*) marked parts are only for model of F2561U9 (cock-pit type).
3. Asterisks (**) marked parts are only for model of F2570U0 (up-right type).

SCHEMATIC DIAGRAM (SUPER IMPOSE)



SUPER IMPOSE PCB



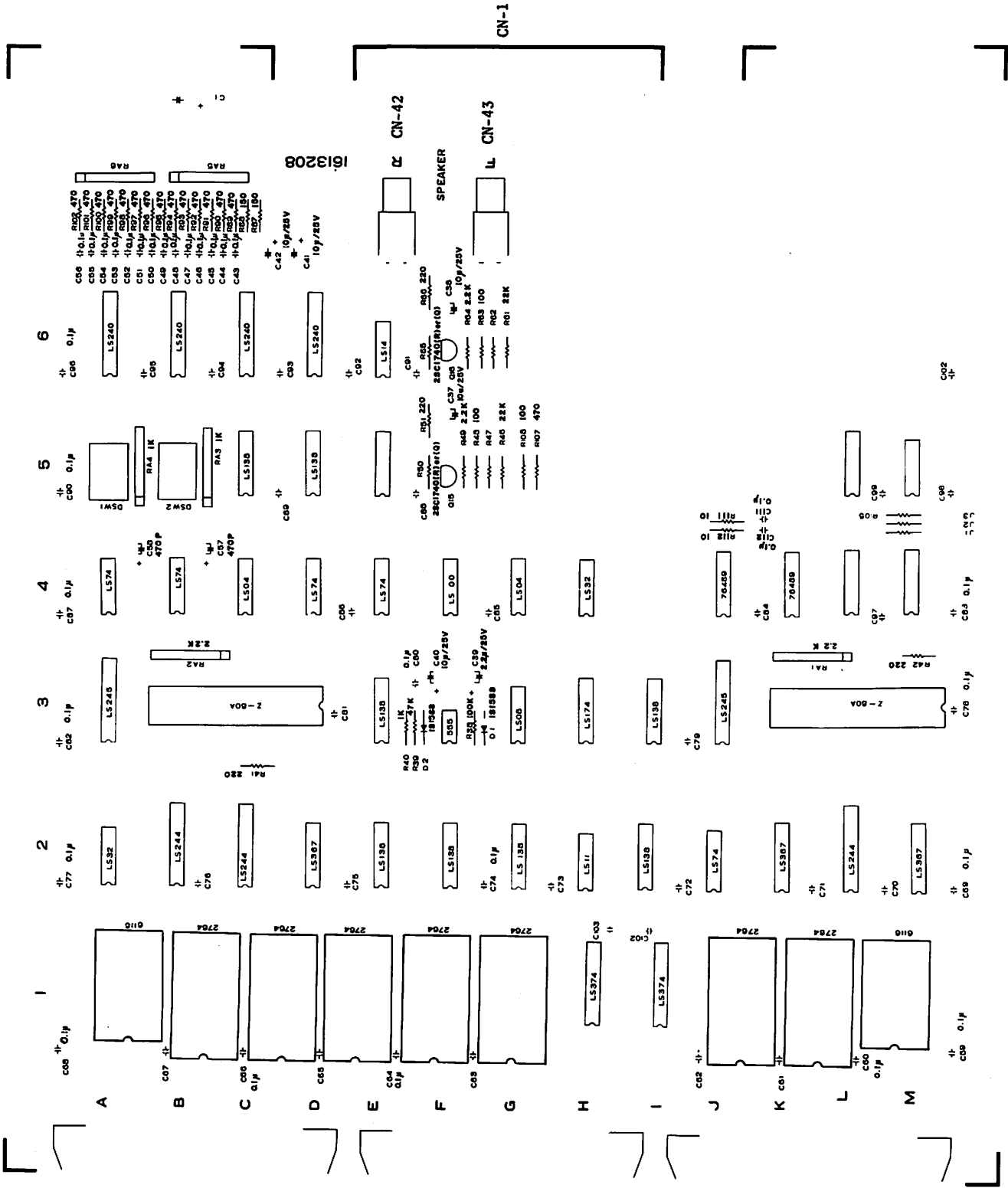
Ref. No.	Description	Part No.	Ref. No.	Description	Part No.
PC Board Ass'y, Super-Impose		1613161A	R316	Res. Carbon 390 ohm	1345391
CAPACITORS			R317	Res. Carbon 1.8K ohm	1345182
C401	Cap. Electrolytic 10 μ F/25V	126D106	R318	Res. Carbon 120 ohm	1345121
C402	Cap. Electrolytic 10 μ F/25V	126D106	R319	Res. Carbon 1.5K ohm	1345152
C403	Cap. Electrolytic 0.22 μ F/50V	126F224	R321	Res. Carbon 3.3K ohm	1345332
C404	Cap. Semi-conductor 0.1 μ F, 12V (Z)	1220385	R322	Res. Carbon 82 ohm	1345820
C405	Cap. Electrolytic 0.22 μ F/50V	126F224	R323	Res. Solic 220 ohm, 1/2W, J	1312221
C406	Cap. Tantal 4.7 μ F/16V	1225475	R324	Res. Carbon 560 ohm	1345561
C407	Cap. Electrolytic 0.22 μ F/50V	126F224	R325	Res. Carbon 100 ohm	1345101
C408	Cap. Ceramic 390pF SL (K)	1271391	R326	Res. Carbon 2.7K ohm	1345272
C409	Cap. Ceramic 68pF SL (K)	1271680	R332	Res. Carbon 22K ohm	1345223
C410	Cap. Ceramic 0.01 μ F (Z)	12G2103	R333	Res. Carbon 330 ohm	1345331
C411	Cap. Ceramic 22pF SL (K)	1271220	R334	Res. Carbon 22K ohm	1345223
C412	Cap. Ceramic 100pF SL (K)	1271101	R335	Res. Carbon 1K ohm	1345102
C416	Cap. Ceramic 68pF SL (K)	1271680	R336	Res. Carbon 1K ohm	1345102
C417	Cap. Ceramic 120pF SL (K)	1271121	R337	Res. Carbon 68K ohm	1345683
C418	Cap. Ceramic 0.01 μ F (Z)	12G2103	R338	Res. Carbon 10K ohm	1345103
C419	Cap. Ceramic 0.01 μ F (Z)	12G2103	R339	Res. Carbon 390 ohm	1345391
C421	Cap. Ceramic 68pF SL (K)	1271680	R341	Res. Carbon 1.8K ohm	1345182
C422	Cap. Electrolytic 1 μ F/50V	126F105	R342	Res. Carbon 120 ohm	1345121
C432	Cap. Ceramic 47pF SL (K)	1271470	R343	Res. Carbon 1.5K ohm	1345152
C433	Cap. Electrolytic 1 μ F/50V	126F105	R344	Res. Carbon 3.3K ohm	1345332
C434	Cap. Electrolytic 100 μ F/16V	126C107	R345	Res. Carbon 82 ohm	1345820
C435	Cap. Ceramic 0.01 μ F (Z)	12G2103	R346	Res. Solic 220 ohm, 1/2W, J	1312221
C436	Cap. Ceramic 0.01 μ F (Z)	12G2103	R347	Res. Carbon 560 ohm	1345561
C437	Cap. Ceramic 0.0047 μ F YB	12B3472	R348	Res. Carbon 100 ohm	1345101
C438	Cap. Electrolytic 10 μ F/25V	126D106	R349	Res. Carbon 2.7K ohm	1345272
C439	Cap. Electrolytic 10 μ F/25V	126D106	R355	Res. Carbon 22K ohm	1345223
C440	Cap. Ceramic 0.01 μ F (Z)	12G2103	R356	Res. Carbon 330 ohm	1345331
C441	Cap. Ceramic 0.01 μ F (Z)	12G2103	R357	Res. Carbon 22K ohm	1345223
C442	Cap. Ceramic 0.01 μ F (Z)	12G2103	R358	Res. Carbon 1K ohm	1345102
C443	Cap. Electrolytic 0.47 μ F/50V	126F474	R359	Res. Carbon 1K ohm	1345102
C444	Cap. Maylar 10 μ F/16V	126C106	R361	Res. Carbon 68K ohm	1345683
C445	Cap. Ceramic 0.01 μ F (Z)	12G2103	R362	Res. Carbon 10K ohm	1345103
C446	Cap. Electrolytic 47 μ F/16V	126C476	R363	Res. Carbon 390 ohm	1345391
C447	Cap. Electrolytic 10 μ F/16V	126C106	R364	Res. Carbon 1.8K ohm	1345182
C448	Cap. Maylar 1 μ F/50V	1254102	R366	Res. Carbon 120 ohm	1345121
C451	Cap. Electrolytic 10 μ F/25V	126F105	R367	Res. Carbon 1.5K ohm	1345152
C461	Cap. Electrolytic 47 μ F/16V	126C476	R368	Res. Carbon 3.3K ohm	1345332
C462	Cap. Electrolytic 47 μ F/16V	126C476	R369	Res. Carbon 82 ohm	1345820
C464	Cap. Electrolytic 47 μ F/16V	126C476	R371	Res. Solid 220 ohm, 1/2W, J	1312221
C465	Cap. Electrolytic 47 μ F/16V	126C476	R372	Res. Carbon 10K ohm	1345103
C467	Cap. Electrolytic 47 μ F/16V	126C476	R373	Res. Carbon 10K ohm	1345103
C468	Cap. Electrolytic 47 μ F/16V	126C476	R374	Res. Carbon 22K ohm	1345223
C472	Cap. Ceramic 39pF SL (K)	1271390	R375	Res. Carbon 27K ohm	1345273
C474	Cap. Ceramic 39pF SL (K)	1271390	R401	Res. Carbon 68K ohm	1345683
C476	Cap. Ceramic 39pF SL (K)	1271390	R402	Res. Carbon 1K ohm	1345102
TC401	Cap. Trimmer 30pF	1280135	R403	Res. Carbon 82 ohm	1345820
RESISTORS			R404	Res. Carbon 15K ohm	1345153
R301	Res. Carbon 560 ohm	1345561	R405	Res. Carbon 470 ohm	1345471
R302	Res. Carbon 100 ohm	1345101	R406	Res. Carbon 27 ohm	1345270
R303	Res. Carbon 2.7K ohm	1345272	R407	Res. Carbon 330K ohm	1345334
R308	Res. Carbon 22K ohm	1345223	R408	Res. Carbon 3.9K ohm	1345392
R309	Res. Carbon 330 ohm	1345331	R409	Res. Carbon 10M ohm	1345106
R311	Res. Carbon 22K ohm	1345223	R410	Res. Carbon 470 ohm	1345471
R312	Res. Carbon 1K ohm	1345102			
R313	Res. Carbon 1K ohm	1345102			
R314	Res. Carbon 68K ohm	1345683			
R315	Res. Carbon 10K ohm	1345103			

Note: 1) Tolerance: J=±5%, K=±10%, M=±20%, Z=+80%/-20%
2) All resistors are 1/4W, J(±5%) unless otherwise noted.

Note: 1. All parts are common for both model of F2561U9 and F2570U0 unless otherwise noted.
2. Asterisk (*) marked parts are only for model of F2561U9 (cock-pit type).
3. Asterisks (**) marked parts are only for model of F2570U0 (up-right type).

Ref. No.	Description	Part No.	Ref. No.	Description	Part No.
R411	Res. Carbon 1K ohm	1345102	ICS		
R412	Res. Carbon 1.5K ohm	1345152	IC401	IC (Chroma. Luma Processor)	μPC1352C
R439	Res. Carbon 1.5K ohm	1345152	IC402	IC	LS05
R440	Res. Carbon 1K ohm	1345102	IC404	IC (H / V Sync. Processor)	HA11235
R441	Res. Carbon 4.7K ohm	1345472	IC405	IC (Sync. Separator)	MC140498
R442	Res. Carbon 560 ohm	1345561	IC406	IC (Regulator)	78L05A
R443	Res. Carbon 5.6K ohm	1345562	JACKS		
R444	Res. Carbon 1K ohm	1345102	J401	Pin Jack	1780005
R455	Res. Carbon 10K ohm	1345103	TRANSISTORS		
R456	Res. Carbon 2.2K ohm	1345222	Q401	TR. 2SC1740(Q) or (R)	C1740QR
R457	Res. Carbon 5.6K ohm	1345562	Q402	TR. 2SC1740(Q) or (R)	C1740QR
R458	Res. Carbon 2.2K ohm	1345222	Q412	TR. 2SC1740(Q) or (R)	C1740QR
R459	Res. Carbon 180 ohm	1345181	Q413	TR. 2SC1740(Q) or (R)	C1740QR
R460	Res. Carbon 2.2K ohm	1345222	Q414	TR. 2SA933(Q) or (R)	A933QR
R461	Res. Carbon 180 ohm	1345181	Q415	TR. 2SC1740(Q) or (R)	C1740QR
R462	Res. Carbon 150 ohm	1345151	Q421	TR. 2SC1740(Q) or (R)	C1740QR
R463	Res. Carbon 5.6K ohm	1345562	Q423	TR. 2SC1740(Q) or (R)	C1740QR
R464	Res. Carbon 22K ohm	1345223	Q424	TR. 2SC1740(Q) or (R)	C1740QR
R465	Res. Carbon 4.7K ohm	1345472	Q425	TR. 2SA933(Q) or (R)	A933QR
R466	Res. Carbon 470 ohm	1345471	Q426	TR. 2SC1740(Q) or (R)	C1740QR
R467	Res. Carbon 4.7K ohm	1345472	Q427	TR. 2SC1740(Q) or (R)	C1740QR
R468	Res. Carbon 4.7K ohm	1345472	Q429	TR. 2SC1740(Q) or (R)	C1740QR
R469	Res. Carbon 47K ohm	1345473	Q431	TR. 2SC1740(Q) or (R)	C1740QR
R471	Res. Carbon 220K ohm	1345224	Q432	TR. 2SA933(Q) or (R)	A933QR
R472	Res. Carbon 68K ohm	1345683	Q433	TR. 2SC1740(Q) or (R)	C1740QR
R473	Res. Carbon 10K ohm	1345103	Q434	TR. 2SC1740(Q) or (R)	C1740QR
R474	Res. Carbon 12K ohm	1345123	Q436	TR. 2SC1740(Q) or (R)	C1740QR
R475	Res. Carbon 4.7K ohm	1345472	Q437	TR. 2SC1740(Q) or (R)	C1740QR
R476	Res. Carbon 27K ohm	1345273	Q438	TR. 2SA933(Q) or (R)	A933QR
R477	Res. Carbon 470K ohm	1345474	Q439	TR. 2SA1740(Q) or (R)	C1740QR
R478	Res. Carbon 18K ohm	1345183	Q411	TR. 2SC1740(Q) or (R)	C1740QR
R479	Res. Carbon 10K ohm	1345103	Q442	TR. 2SC1740(Q) or (R)	C1740QR
R481	Res. Carbon 47K ohm	1345473	RESISTORS - 2		
R482	Res. Carbon 10K ohm	1345103	VR402	Res. Semi-Fixed 10K ohm (B)	138A421
R483	Res. Carbon 10K ohm	1345103	VR403	Res. Semi-Fixed 10K ohm (B)	138A421
R484	Res. Carbon 10K ohm	1345103	VR404	Res. Semi-Fixed 10K ohm (B)	138A421
R485	Res. Carbon 2.2K ohm	1345222	VR405	Res. Semi-Fixed 10K ohm (B)	138A421
R486	Res. Carbon 10K ohm	1345103	VR411	Res. Semi-Fixed 10K ohm (B)	138A421
COILS			VR412	Res. Semi-Fixed 10K ohm (B)	138A421
L401	Coil, 33μH	2151330	VR413	Res. Semi-Fixed 10K ohm (B)	138A421
L402	Coil, 27μH	2151270	MISCELLANEOUS		
L403	Coil, 27μH	2151270	CN6	NH Connector Pin (8P)	1740198
L404	Coil, 4.7μH	1170442	CN7	NH Connector Pin (7P)	1720982
CRYSTAL			CN32	NH Connector Pin (5P)	1720980
X401	Crystal (3.5795 MHz)	1811062	PC Board Support 1790400		
DIODES					
D401	Diode	1S2473	1790400		
D402	Diode	1S2473			
D403	Diode	1S2473			
D404	Diode	1S2473			
D405	Diode	1S2473			
D406	Diode	1S2473			
D407	Diode	1S2473			
FILTER					
FL401	B.P.F. (3.58 MHz)	113M546			
DL401	Delay Line (385ns)	1810523			

CONTROL PCB I



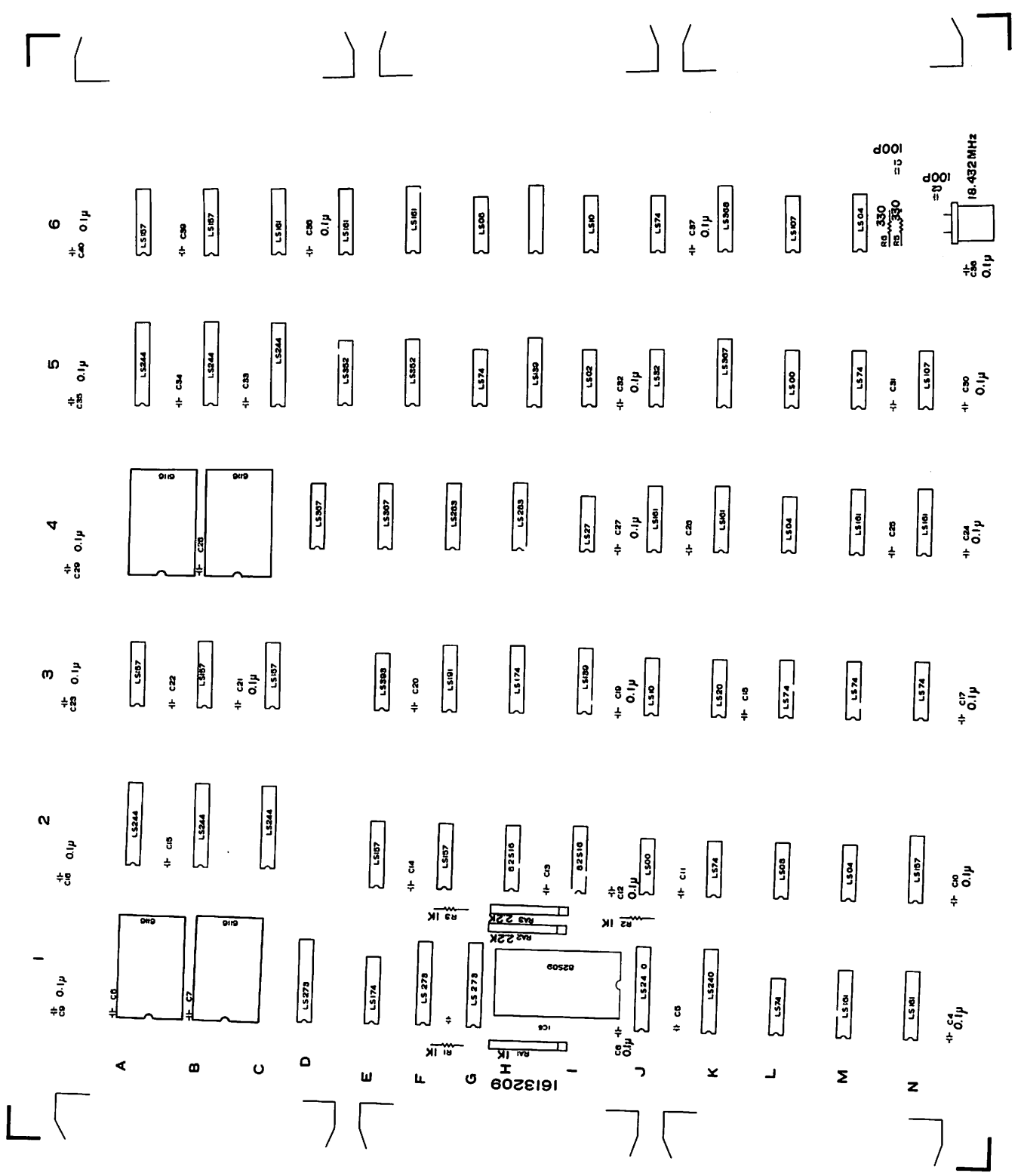
Ref. No.	Description	Part No.			
R63	Res. Carbon 100 ohm	1346101			
R64	Res. Carbon 2.2K ohm	1346222			
R66	Res. Carbon 220 ohm	1346221			
R87	Res. Carbon 150 ohm	1346151			
R88	Res. Carbon 150 ohm	1346151			
R89	Res. Carbon 470 ohm	1346471			
R90	Res. Carbon 470 ohm	1346471			
R91	Res. Carbon 470 ohm	1346471			
R92	Res. Carbon 470 ohm	1346471			
R93	Res. Carbon 470 ohm	1346471			
R94	Res. Carbon 470 ohm	1346471			
R95	Res. Carbon 470 ohm	1346471			
R96	Res. Carbon 470 ohm	1346471			
R97	Res. Carbon 470 ohm	1346471			
R98	Res. Carbon 470 ohm	1346471			
R99	Res. Carbon 470 ohm	1346471			
R100	Res. Carbon 470 ohm	1346471			
R101	Res. Carbon 470 ohm	1346471			
R102	Res. Carbon 470 ohm	1346471			
R107	Res. Carbon 470 ohm	1346471			
R108	Res. Carbon 100 ohm	1346101			
R111	Res. Carbon 10 ohm	1346100			
R112	Res. Carbon 10 ohm	1346100			
RA1	Res. Pack (9P), 2.2K x 8, 1/8W	137E010			
RA2	Res. Pack (9P), 2.2K x 8, 1/8W	137E010			
RA3	Res. Pack (9P), 1K x 8, 1/8W	137E009			
RA4	Res. Pack (9P), 1K x 8, 1/8W	137E009			
RA5	Res. Pack (9P), 1K x 8, 1/8W	137E009			
RA6	Res. Pack (9P), 1K x 8, 1/8W	137E009			
RA7	Res. Pack (9P), 10K x 8, 1/8W	137E011			
SWITCHES					
DSW1	Dip Switch (6P)	1623334			
DSW2	Dip Switch (6P)	1623334			
TRANSISTORS					
Q15	TR. 2SC1740(R) or (Q)	C1740RQ			
Q16	TR. 2SC1740(R) or (Q)	C1740RQ			
MISCELLANEOUS					
	28 Pin Dip Socket	1730395			
	40 Pin Dip Socket	1730396			

Ref. No.	Description	Part No.	Ref. No.	Description	Part No.
PC Board Ass'y, Control PCB I			1810505		
ICS					
IC1	RAM, HM6116-4 (200ns)	6116-4	C42	Cap. Tantal 10 μ F/25V	1210106
IC3	EP-ROM, 2764	2764	C43	Cap. Semi-conductor 0.1 μ F, 12V (Z)	1220385
IC4	TTL, 74LS374	LS374	C44	Cap. Semi-conductor 0.1 μ F, 12V (Z)	1220385
IC5	TTL, 74LS374	LS374	C45	Cap. Semi-conductor 0.1 μ F, 12V (Z)	1220385
IC6	EP-ROM, 2764	2764	C46	Cap. Semi-conductor 0.1 μ F, 12V (Z)	1220385
IC7	EP-ROM, 2764	2764	C47	Cap. Semi-conductor 0.1 μ F, 12V (Z)	1220385
IC8	EP-ROM, 2764	2764	C48	Cap. Semi-conductor 0.1 μ F, 12V (Z)	1220385
IC9	EP-ROM, 2764	2764	C49	Cap. Semi-conductor 0.1 μ F, 12V (Z)	1220385
IC10	EP-ROM, 2764	2764	C50	Cap. Semi-conductor 0.1 μ F, 12V (Z)	1220385
IC11	RAM, HM6116-4 (200ns)	6116-4	C51	Cap. Semi-conductor 0.1 μ F, 12V (Z)	1220385
IC12	TTL, 74LS367A	LS367A	C52	Cap. Semi-conductor 0.1 μ F, 12V (Z)	1220385
IC13	TTL, 74LS244	LS244	C53	Cap. Semi-conductor 0.1 μ F, 12V (Z)	1220385
IC14	TTL, 74LS367A	LS367A	C54	Cap. Semi-conductor 0.1 μ F, 12V (Z)	1220385
IC15	TTL, 74LS74	LS74	C55	Cap. Semi-conductor 0.1 μ F, 12V (Z)	1220385
IC16	TTL, 74LS138	LS138	C56	Cap. Semi-conductor 0.1 μ F, 12V (Z)	1220385
IC17	TTL, 74LS11	LS11	C57	Cap. Ceramic 470pF SL (K)	1271471
IC18	TTL, 74LS138	LS138	C58	Cap. Ceramic 470pF SL (K)	1271471
IC19	TTL, 74LS138	LS138	C59	Cap. Semi-conductor 0.1 μ F, 12V (Z)	1220385
IC20	TTL, 74LS138	LS138	C60	Cap. Semi-conductor 0.1 μ F, 12V (Z)	1220385
IC21	TTL, 74LS367A	LS367A	C64	Cap. Semi-conductor 0.1 μ F, 12V (Z)	1220385
IC22	TTL, 74LS244	LS244	C66	Cap. Semi-conductor 0.1 μ F, 12V (Z)	1220385
IC23	TTL, 74LS244	LS244	C68	Cap. Semi-conductor 0.1 μ F, 12V (Z)	1220385
IC24	TTL, 74LS32	LS32	C69	Cap. Semi-conductor 0.1 μ F, 12V (Z)	1220385
IC25	CPU, LH0080A	LH0080A	C74	Cap. Semi-conductor 0.1 μ F, 12V (Z)	1220385
IC26	TTL, 74LS245	LS245	C77	Cap. Semi-conductor 0.1 μ F, 12V (Z)	1220385
IC27	TTL, 74LS138	LS138	C78	Cap. Semi-conductor 0.1 μ F, 12V (Z)	1220385
IC28	TTL, 74LS174	LS174	C80	Cap. Semi-conductor 0.1 μ F, 12V (Z)	1220385
IC29	TTL, 74LS08	LS08	C82	Cap. Semi-conductor 0.1 μ F, 12V (Z)	1220385
IC30	Timer, NE555	NE555	C83	Cap. Semi-conductor 0.1 μ F, 12V (Z)	1220385
IC31	TTL, 74LS138	LS138	C87	Cap. Semi-conductor 0.1 μ F, 12V (Z)	1220385
IC32	CPU, LH0080A	LH0080A	C90	Cap. Semi-conductor 0.1 μ F, 12V (Z)	1220385
IC33	TTL, 74LS245	LS245	C96	Cap. Semi-conductor 0.1 μ F, 12V (Z)	1220385
IC34	SGC, SN76489AN	SN76489AN	C98	Cap. Semi-conductor 0.1 μ F, 12V (Z)	1220385
IC35	SGC, SN76489AN	SN76489AN	C111	Cap. Semi-conductor 0.1 μ F, 12V (Z)	1220385
IC36	TTL, 74LS32	LS32	C112	Cap. Semi-conductor 0.1 μ F, 12V (Z)	1220385
IC37	TTL, 74LS04	LS04	DIODES		
IC38	TTL, 74LS00	LS00	D1	Diode	1S2473
IC39	TTL, 74LS74	LS74	D2	Diode	1S2473
IC40	TTL, 74LS74	LS74	RESISTORS		
IC41	TTL, 74LS04	LS04	R38	Res. Carbon 100K ohm	1346104
IC42	TTL, 74LS74	LS74	R39	Res. Carbon 47K ohm	1346473
IC43	TTL, 74LS74	LS74	R40	Res. Carbon 1K ohm	1346102
IC48	TTL, 74LS138	LS138	R41	Res. Carbon 220 ohm	1346221
IC49	TTL, 74LS138	LS138	R42	Res. Carbon 220 ohm	1346221
IC50	TTL, 74LS14	LS14	R46	Res. Carbon 22K ohm	1346223
IC51	TTL, 74LS240	LS240	R48	Res. Carbon 100 ohm	1346101
IC52	TTL, 74LS240	LS240	R49	Res. Carbon 2.2K ohm	1346222
IC53	TTL, 74LS240	LS240	R51	Res. Carbon 220 ohm	1346221
IC54	TTL, 74LS240	LS240	R61	Res. Carbon 22K ohm	1346223
JACK					
	Jack, Pin RCA	1780005			
CAPACITORS					
C37	Cap. Electrolytic	10 μ F/25V	126D106		
C38	Cap. Electrolytic	10 μ F/25V	126D106		
C39	Cap. Electrolytic	2.2 μ F/25V	126D225		
C40	Cap. Electrolytic	10 μ F/25V	126D106		
C41	Cap. Tantal	10 μ F/25V	1210106		

Note: 1) Tolerance: J=±5%, K=±10%, M=±20%, Z=+80%/−20%
2) All resistors are 1/4W, J(±5%) unless otherwise noted.

Note: 1. All parts are common for both model of F2561U9 and F2570U0 unless otherwise noted.
2. Asterisk (*) marked parts are only for model of F2561U9 (cock-pit type).
3. Asterisks (**) marked parts are only for model of F2570U0 (up-right type).

CONTROL PCB II

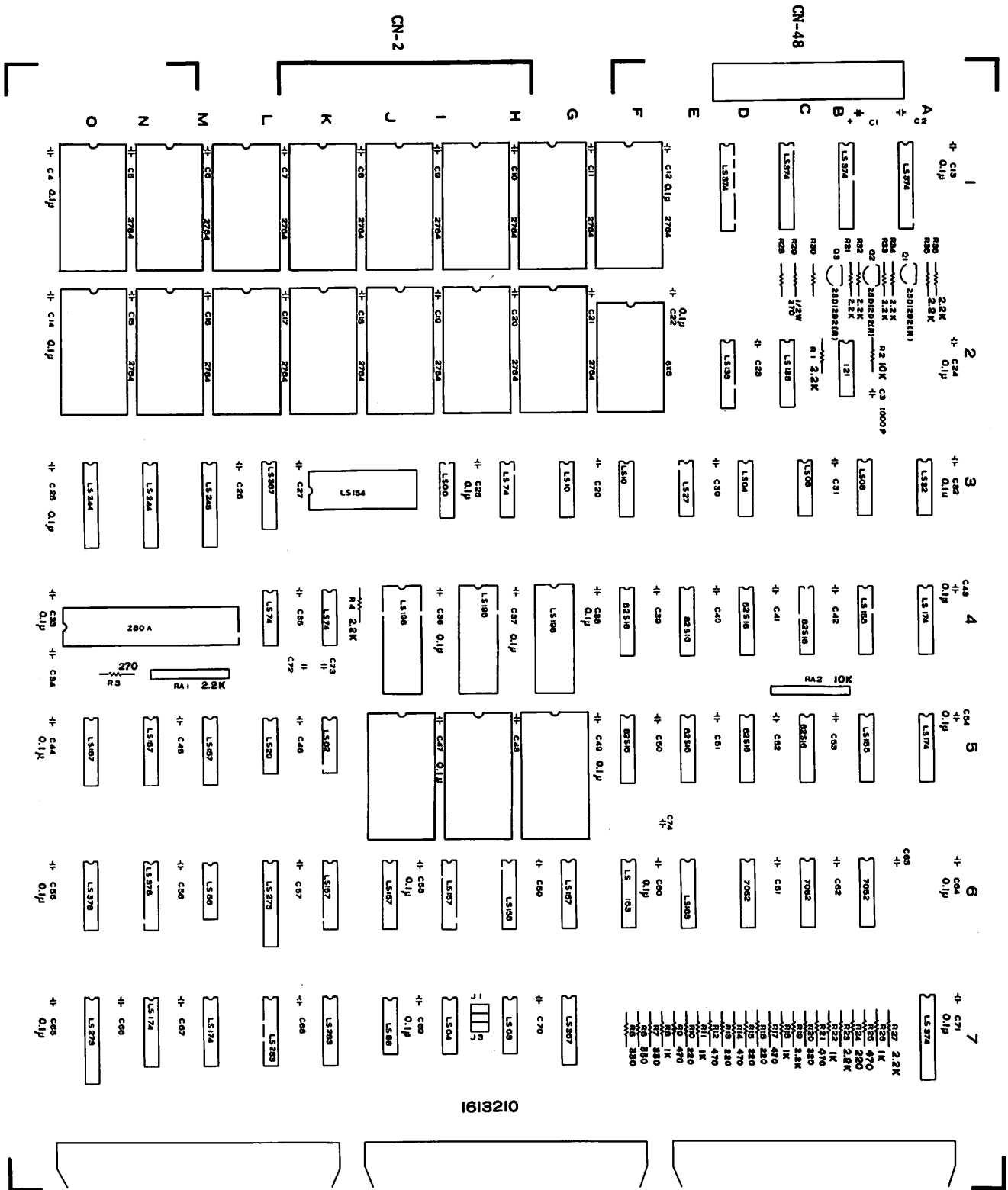


Ref. No.	Description	Part No.	Ref. No.	Description	Part No.
PC Board Ass'y, Control PCB II			IC65	TTL, 74LS08	LS08
			IC66	TTL, 74LS161	LS161
ICS			IC67	TTL, 74LS161	LS161
IC1	TTL, 74LS161	LS161	IC68	TTL, 74LS161	LS161
IC2	TTL, 74LS161	LS161	IC69	TTL, 74LS157	LS157
IC3	TTL, 74LS74	LS74	IC70	TTL, 74LS157	LS157
IC4	TTL, 74LS240	LS240	IC71	TTL, 74LS273	LS273
IC5	TTL, 74LS240	LS240	IC72	TTL, 74LS273	LS273
IC6	TTL, RAM, 82S09 (55ns)	82S09	CAPACITORS		
IC7	TTL, 74LS174	LS174	C1	Cap. Ceramic 100pF SL (K)	1271101
IC8	TTL, 74LS273	LS273	C2	Cap. Ceramic 100pF SL (K)	1271101
IC9	RAM, HM6116-4 (200ns)	6116-4	C4	Cap. Semi-conductor 0.1μF, 12V (Z)	1220385
IC10	RAM, HM6116-4 (200ns)	6116-4	C6	Cap. Semi-conductor 0.1μF, 12V (Z)	1220385
IC11	TTL, 74LS157	LS157	C9	Cap. Semi-conductor 0.1μF, 12V (Z)	1220385
IC12	TTL, 74LS04	LS04	C10	Cap. Semi-conductor 0.1μF, 12V (Z)	1220385
IC13	TTL, 74LS08	LS08	C12	Cap. Semi-conductor 0.1μF, 12V (Z)	1220385
IC14	TTL, 74LS74	LS74	C16	Cap. Semi-conductor 0.1μF, 12V (Z)	1220385
IC15	TTL, 74LS00	LS00	C17	Cap. Semi-conductor 0.1μF, 12V (Z)	1220385
IC16	TTL, RAM, 82S16 (55ns)	82S16	C19	Cap. Semi-conductor 0.1μF, 12V (Z)	1220385
IC17	TTL, RAM, 82S16 (55ns)	82S16	C21	Cap. Semi-conductor 0.1μF, 12V (Z)	1220385
IC18	TTL, 74LS157	LS157	C23	Cap. Semi-conductor 0.1μF, 12V (Z)	1220385
IC19	TTL, 74LS157	LS157	C24	Cap. Semi-conductor 0.1μF, 12V (Z)	1220385
IC20	TTL, 74LS244	LS244	C27	Cap. Semi-conductor 0.1μF, 12V (Z)	1220385
IC21	TTL, 74LS244	LS244	C29	Cap. Semi-conductor 0.1μF, 12V (Z)	1220385
IC22	TTL, 74LS244	LS244	C30	Cap. Semi-conductor 0.1μF, 12V (Z)	1220385
IC23	TTL, 74LS74	LS74	C32	Cap. Semi-conductor 0.1μF, 12V (Z)	1220385
IC24	TTL, 74LS74	LS74	C35	Cap. Semi-conductor 0.1μF, 12V (Z)	1220385
IC26	TTL, 74LS20	LS20	C36	Cap. Semi-conductor 0.1μF, 12V (Z)	1220385
IC27	TTL, 74LS10	LS10	C37	Cap. Semi-conductor 0.1μF, 12V (Z)	1220385
IC28	TTL, 74LS139	LS139	C38	Cap. Semi-conductor 0.1μF, 12V (Z)	1220385
IC29	TTL, 74LS174	LS174	C40	Cap. Semi-conductor 0.1μF, 12V (Z)	1220385
IC30	TTL, 74LS191	LS191	C41	Cap. Ceramic 100pF SL (K)	1271101
IC31	TTL, 74LS393	LS393	RESISTORS		
IC32	TTL, 74LS157	LS157	R1	Res. Carbon 1K ohm	1346102
IC33	TTL, 74LS157	LS157	R2	Res. Carbon 1K ohm	1346102
IC34	TTL, 74LS157	LS157	R3	Res. Carbon 1K ohm	1346102
IC35	TTL, 74LS161	LS161	R5	Res. Carbon 330 ohm	1346331
IC36	TTL, 74LS161	LS161	R6	Res. Carbon 330 ohm	1346331
IC37	TTL, 74LS04	LS04	RA1	Res. Pack (9P), 1K x 8, 1/8W	137E009
IC38	TTL, 74LS161	LS161	RA2	Res. Pack (9P), 2.2K x 8, 1/8W	137E010
IC39	TTL, 74LS161	LS161	RA3	Res. Pack (9P), 2.2K x 8, 1/8W	137E010
IC40	TTL, 74LS27	LS27	MISCELLANEOUS		
IC41	TTL, 74LS283	LS283	Crystal (18.432 MHz)		1811061
IC42	TTL, 74LS283	LS283			
IC43	TTL, 74LS367A	LS367A			
IC44	TTL, 74LS367A	LS367A			
IC45	RAM, HM6116-3 (150ns)	6116-3			
IC46	RAM, HM6116-3 (150ns)	6116-3			
IC47	TTL, 74LS107	LS107			
IC48	TTL, 74LS74	LS74			
IC49	TTL, 74LS00	LS00			
IC50	TTL, 74LS367A	LS367A			
IC51	TTL, 74LS32	LS32			
IC52	TTL, 74LS02	LS02			
IC53	TTL, 74LS139	LS139			
IC54	TTL, 74LS74	LS74			
IC55	TTL, 74LS352	LS352			
IC56	TTL, 74LS352	LS352			
IC57	TTL, 74LS244	LS244			
IC58	TTL, 74LS244	LS244			
IC59	TTL, 74LS244	LS244			
IC60	TTL, 74LS04	LS04			
IC61	TTL, 74LS107	LS107			
IC62	TTL, 74LS368A	LS368A			
IC63	TTL, 74LS74	LS74			
IC64	TTL, 74LS10	LS10			

- Note:
1. All parts are common for both model of F2561U9 and F2570U0 unless otherwise noted.
 2. Asterisk (*) marked parts are only for model of F2561U9 (cock-pit type).
 3. Asterisks (**) marked parts are only for model of F2570U0 (up-right type).

Ref. No.	Description	Part No.	Ref. No.	Description	Part No.
PC Board Ass'y, Control PCB III			IC75	FUSE-ROM, MB7052	MB7052
			IC76	FUSE-ROM, MB7052	MB7052
			IC77	FUSE-ROM, MB7052	MB7052
			IC78	TTL, 74LS73	LS273
			IC79	TTL, 74LS174	LS174
ICS			IC80	TTL, 74LS174	LS174
IC4	TTL, 74LS174	LS174	IC81	TTL, 74LS283	LS283
IC8	EP-ROM, 2764	2764	IC82	TTL, 74LS283	LS283
IC9	TTL, 74LS374	LS374	IC84	TTL, 74LS04	LS04
IC10	TTL, 74LS374	LS374	IC85	TTL, 74LS08	LS08
IC11	TTL, 74LS374	LS374	IC86	TTL, 74LS86	LS86
IC12	TTL, 74LS374	LS374	IC87	TTL, 74LS374	LS374
IC20	RAM, HM6116-4 (200ns)	6116-4	CAPACITORS		
IC21	TTL, 74LS138	LS138	C3	Cap. Ceramic 1000pF YB (K)	1283102
IC22	TTL, 74LS138	LS138	C4	Cap. Semi-conductor 0.1μF, 12V (Z)	1220385
IC23	TTL, 74121	74121	C12	Cap. Semi-conductor 0.1μF, 12V (Z)	1220385
IC24	TTL, 74LS244	LS244	C13	Cap. Semi-conductor 0.1μF, 12V (Z)	1220385
IC25	TTL, 74LS244	LS244	C14	Cap. Semi-conductor 0.1μF, 12V (Z)	1220385
IC26	TTL, 74LS245	LS245	C22	Cap. Semi-conductor 0.1μF, 12V (Z)	1220385
IC27	TTL, 74LS367A	LS367A	C24	Cap. Semi-conductor 0.1μF, 12V (Z)	1220385
IC28	TTL, 74LS154	LS154	C25	Cap. Semi-conductor 0.1μF, 12V (Z)	1220385
IC29	TTL, 74LS00	LS00	C28	Cap. Semi-conductor 0.1μF, 12V (Z)	1220385
IC30	TTL, 74LS74	LS74	C32	Cap. Semi-conductor 0.1μF, 12V (Z)	1220385
IC31	TTL, 74LS10	LS10	C33	Cap. Semi-conductor 0.1μF, 12V (Z)	1220385
IC32	TTL, 74LS10	LS10	C36	Cap. Semi-conductor 0.1μF, 12V (Z)	1220385
IC33	TTL, 74LS27	LS27	C37	Cap. Semi-conductor 0.1μF, 12V (Z)	1220385
IC34	TTL, 74LS04	LS04	C38	Cap. Semi-conductor 0.1μF, 12V (Z)	1220385
IC35	TTL, 74LS08	LS08	C43	Cap. Semi-conductor 0.1μF, 12V (Z)	1220385
IC36	TTL, 74LS08	LS08	C44	Cap. Semi-conductor 0.1μF, 12V (Z)	1220385
IC37	TTL, 74LS32	LS32	C47	Cap. Semi-conductor 0.1μF, 12V (Z)	1220385
IC38	CPU, LH0080A	LH0080A	C49	Cap. Semi-conductor 0.1μF, 12V (Z)	1220385
IC39	TTL, 74LS74	LS74	C54	Cap. Semi-conductor 0.1μF, 12V (Z)	1220385
IC40	TTL, 74LS74	LS74	C55	Cap. Semi-conductor 0.1μF, 12V (Z)	1220385
IC41	TTL, 74198	74198	C58	Cap. Semi-conductor 0.1μF, 12V (Z)	1220385
IC42	TTL, 74198	74198	C60	Cap. Semi-conductor 0.1μF, 12V (Z)	1220385
IC43	TTL, 74198	74198	C64	Cap. Semi-conductor 0.1μF, 12V (Z)	1220385
IC44	TTL RAM, 82S16 (55ns)	82S16	C65	Cap. Semi-conductor 0.1μF, 12V (Z)	1220385
IC45	TTL RAM, 82S16 (55ns)	82S16	C69	Cap. Semi-conductor 0.1μF, 12V (Z)	1220385
IC46	TTL RAM, 82S16 (55ns)	82S16	C71	Cap. Semi-conductor 0.1μF, 12V (Z)	1220385
IC47	TTL RAM, 82S16 (55ns)	82S16	C100	Cap. Ceramic 1000pF YB (K)	12B3102
IC48	TTL, 74LS158	LS158	RESISTORS		
IC49	TTL, 74LS174	LS174	R1	Res. Carbon 2.2K ohm	1346222
IC50	TTL, 74LS157	LS157	R2	Res. Carbon 10K ohm	1346103
IC51	TTL, 74LS157	LS157	R3	Res. Carbon 270 ohm	1346271
IC52	TTL, 74LS157	LS157	R4	Res. Carbon 2.2K ohm	1346222
IC53	TTL, 74LS20	LS20	R5	Res. Carbon 330 ohm	1346331
IC54	TTL, 74LS02	LS02	R6	Res. Carbon 330 ohm	1346331
IC55	EP-ROM, 2764	2764	R7	Res. Carbon 330 ohm	1346331
IC56	EP-ROM, 2764	2764	R8	Res. Carbon 1K ohm	1346102
IC57	EP-ROM, 2764	2764	R9	Res. Carbon 470 ohm	1346471
IC58	TTL RAM, 82S16 (55ns)	82S16	R10	Res. Carbon 220 ohm	1346221
IC59	TTL RAM, 82S16 (55ns)	82S16	R11	Res. Carbon 1K ohm	1346102
IC60	TTL RAM, 82S16 (55ns)	82S16	R12	Res. Carbon 470 ohm	1346471
IC61	TTL RAM, 82S16 (55ns)	82S16	R13	Res. Carbon 220 ohm	1346221
IC62	TTL, 74LS158	LS158	R14	Res. Carbon 470 ohm	1346471
IC63	TTL, 74LS174	LS174	R15	Res. Carbon 220 ohm	1346221
IC64	TTL, 74LS378	LS378	R16	Res. Carbon 220 ohm	1346221
IC65	TTL, 74LS378	LS378	R17	Res. Carbon 470 ohm	1346471
IC66	TTL, 74LS86	LS86	R18	Res. Carbon 1K ohm	1346102
IC67	TTL, 74LS273	LS273	R19	Res. Carbon 2.2K ohm	1346222
IC68	TTL, 74LS157	LS157	R20	Res. Carbon 220 ohm	1346221
IC69	TTL, 74LS157	LS157			
IC70	TTL, 74LS157	LS157			
IC71	TTL, 74LS158	LS158			
IC72	TTL, 74LS157	LS157			
IC73	TTL, 74LS163	LS163			
IC74	TTL, 74LS163	LS163			

CONTROL PCB III



1613210

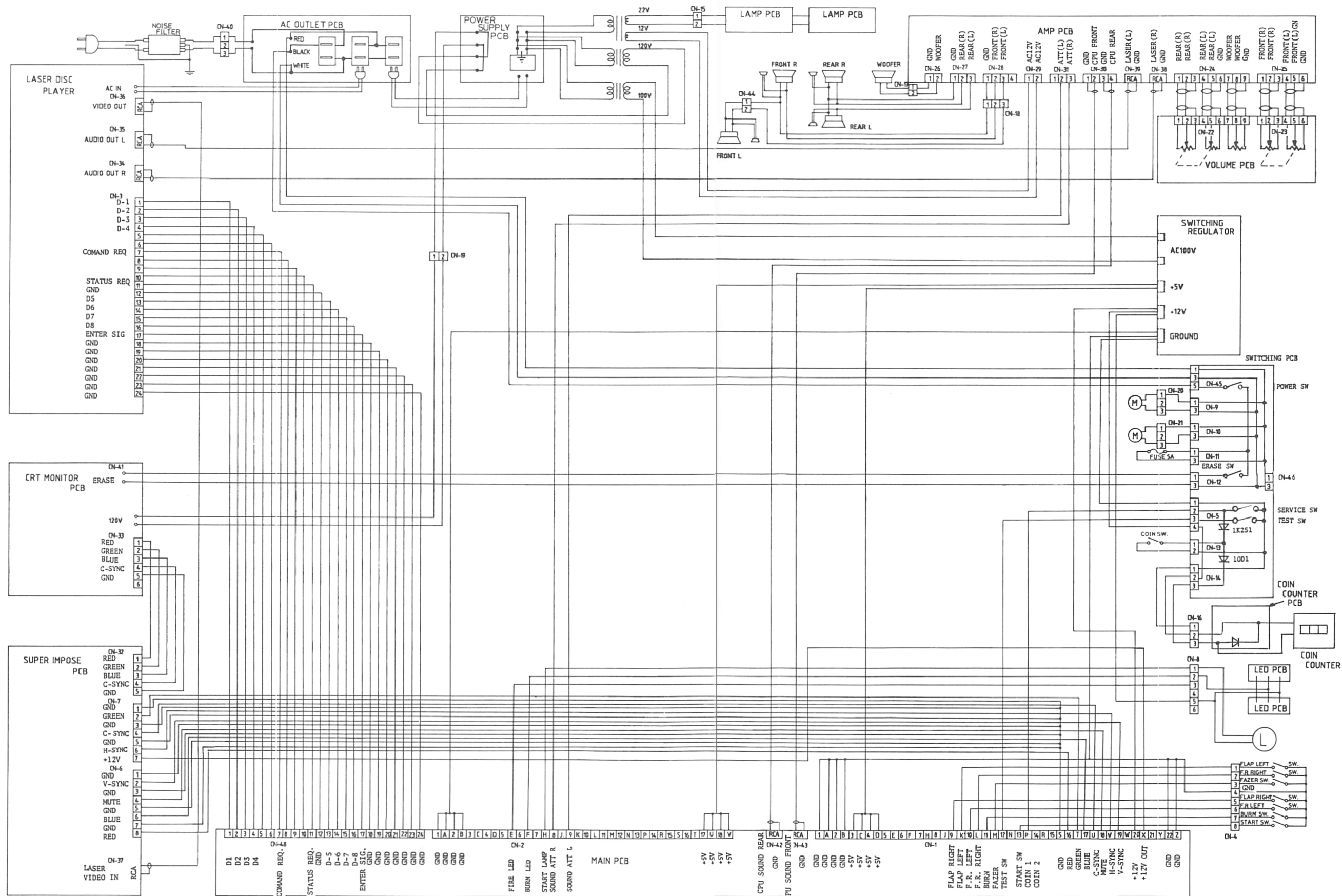
Ref. No.	Description	Part No.	Ref. No.	Description	Part No.
R21	Res. Carbon 470 ohm	1346471	PC Board Ass'y, Switch 1613205A		
R22	Res. Carbon 1K ohm	1346102			
R23	Res. Carbon 2.2K ohm	1346222			
R24	Res. Carbon 220 ohm	1346221			
R25	Res. Carbon 470 ohm	1346471			
R26	Res. Carbon 1K ohm	1346102	DIODES		
R27	Res. Carbon 2.2K ohm	1346222		Diode, Germanium Diode	1K261 10D-1
R29	Res. Carbon 270 ohm, 1/2W J	1322271	MISCELLANEOUS		
R30	Res. Carbon 470 ohm	1346471	CN5	VH Connector Pin (4P)	1730270
R31	Res. Carbon 2.2K ohm	1346222	CN9	VH Connector Pin (3P)	1740800
R32	Res. Carbon 2.2K ohm	1346222	CN10	VH Connector Pin (3P)	1740800
R33	Res. Carbon 2.2K ohm	1346222	CN11	VH Connector Pin (3P)	1704800
R34	Res. Carbon 2.2K ohm	1346222	CN12	VH Connector Pin (3P)	1740800
R35	Res. Carbon 2.2K ohm	1346222	CN13	VH Connector Pin (2P)	1730268
R36	Res. Carbon 2.2K ohm	1346222	CN14	VH Connector Pin (3P)	1730269
RESISTOR PACKS			CN45	VH Connector Pin (5P)	1730272
RA1	Res. Pack (9P), 2.2K x 8, 1/8W	137E010	CN46	VH Connector Pin (3P)	1740800
RA2	Res. Pack (9P), 10K x 8, 1/8W	137E011	PC Board Ass'y, AMP Volume 1613163A		
TRANSISTORS			VARIABLE RESITOR		
Q1	TR. 2SD1292(R)	D1292R		Res. Variable 50K ohm (A)	5390519
Q2	TR. 2SD1292(R)	D1292R	MISCELLANEOUS		
Q3	TR. 2SD1292(R)	D1292R	CN22	NH Connector Pin (9P)	1740200
MISCELLANEOUS			CN23	NH Connector Pin (6P)	1720977
	16 Pin Dip Socket	1730389	OTHERS, CONTROL PCB ASS'Y		
	28 Pin Dip Socket	1730395		Ribbon Cable Connector Ass'y (50P)	1760480A
	40 Pin Dip Scket	1730396	PC Board Ass'y, Reset 1613258A		
	Ribbon Cable Connector (24P)	173M275	CAPACITORS		
<p>Note: 1. All parts are common for both model of F2561U9 and F2570U0 unless otherwise noted.</p> <p>2. Asterisk (*) marked parts are only for model of F2561U9 (cock-pit type).</p> <p>3. Asterisks (**) marked parts are only for model of F2570U0 (up-right type).</p>				Cap. Ceramic 470pF, SL (K)	1271471
				Cap. Ceramic 0.1μF, 12V (Z)	1220385
			DIODES		
				Diode	1SS133
			ICS		
				TTL, 74LS00	LS00
				TTL, 74LS93	LS93
				TTL, 74LS393	LS393
			RESISTORS		
				Res. Carbon 470 ohm	1346471
				Res. Carbon 1K ohm	1346102
				Res. Carbon 10K ohm	1346103
			TRANSISTOR		
				TR. 2SD467(C)	SD467C
			MISCELLANEOUS		
				Header Connector, 10 Pin	1730444

Ref. No.	Description	Part No.
PC Board Ass'y, Power Supply 1613204A		
FILTER		
	Noise Filter	1810520
PCB Ass'y, Power Supply		
MISCELLANEOUS		
	Wrapping Terminal (2P)	1740628
	Wrapping Terminal (3P)	1740629
	AC Cord	1750663
	Cord Clamper	1790123
	Cord Clamper	1790125

Ref. No.	Description	Part No.			
OTHERS, MAIN CABINET					
	Laser Disk Player Ass'y Laser Disk	1810538 1543001			
	AC Cord Stopper AC Cord Stopper AC Outlet	1790381 1790407 171C048/ 1710043			
	AC Outlet PCB	1613206			
	Cable Tie Fastener AC Cord (W/Grounding-type Plug) Fuse Holder Fuse Holder	1790388 1790356 1750670 1790386 1790380			
	Fuse, 5A Fuse, 2A	1790401 1790402			
	Clamper, Harness-wire Cord Clamper	1790408 1790392			
	Speaker *Speaker (Tweeter) *Speaker (Woofer)	1520410 1520366 1520433			
	**Fluorescent lamp **FL Glow lamp	1830269 1830268			
	*Lamp PCB *Lamp Holder *Lamp (24V, 2W)	1613211 1790344 1830257			
	*Counter PCB *Diode	1613207 10D-1			
	Main Switch Erase Switch Service Switch Test Switch	1623352 1623338 1622899 1622934			
	*PC Board Ass'y, LED *LED (Red) *LED (Yellow) NOISE FILTER	1613162A LD-706YR LD-706YY 1810542			

- Note:
1. All parts are common for both model of F2561U9 and F2570U0 unless otherwise noted.
 2. Asterisk (*) marked parts are only for model of F2561U9 (cock-pit type).
 3. Asterisks (**) marked parts are only for model of F2570U0 (up-right type).

WIRING DIAGRAM (FOR COCKPIT TYPE)



WIRING DIAGRAM (FOR UPRIGHT TYPE)

